

Skid Steer and Compact Track Loaders (Large Frame)



**WACKER
NEUSON**
all it takes!

**Blanchard
Machinery**



RENTAL / SALES / SERVICE



A new era of productivity.

Wheeled and track models to handle every job.

Different jobs call for different needs from your machine. We offer various lift arm configurations that meet those demands. With an industry leading 11' 2" bucket pin height on the vertical configurations and 10' 5" bucket pin height on the radial configurations, loading and unloading, even the most difficult materials into different truck types, becomes an easy everyday task.

Choose the best match.

Skid Steer vs. Track Loader Comparison

Application	Skid Steer	Track Loader
Working on asphalt/concrete	X	
Demolition	X	
Excavation on soft surface		X
Working in muddy conditions		X
Low ground disturbance		X

Vertical vs. Radial Comparison

Application	Vertical	Radial
Pallet fork	X	
Truck loading	X	
Post hole auger operation	X	
Excavation in hard soil		X
Heavy lifting to truck bed height		X

Choose your path.

Vertical Lift

Vertical lift provides more reach at full height, ideal for dumping and loading trucks with high sides. Because of the vertical path of the arm and 11' 2" bucket hinge height, loading hoppers and using pallet forks just became much easier.



Radial Lift

Radial lift provides more horizontal reach, ideal for loading and unloading flat bed trucks. Due to the radial path, the arm's midpoint extends further away from the machine than the vertical lift configuration.



All models are engineered with German precision and built with American pride.



SW24
Radial Lift

ROC 50% = 2,350 lbs

SKID STEER LOADERS



SW28
Vertical Lift

ROC 50% = 2,800 lbs



ST35
Radial Lift

ROC 50% = 3,500 lbs

COMPACT TRACK LOADERS



ST45
Vertical Lift

ROC 50% = 4,500 lbs

Superior performance, unmatched comfort.

Our engineers have worked closely with operators to design skid steer and compact track loaders for the North American market. This line of Wacker Neuson equipment is built, tested and proven to stand up to the most rugged conditions. Look no further than Wacker Neuson for equipment engineered to deliver high performance, durability and comfort.



Hydraulic driven fan allows for significantly reduced noise.



Optional high flow provides auxiliary flow of 35.9 gpm.



Reliable on any jobsite – proven to stand up to the most rugged conditions.



SW24, SW28

The Wacker Neuson Skid Steer Loaders (SSL) deliver performance and durability on any jobsite. The SW24 radial lift delivers 2,350 lbs of rated operating capacity (ROC) at 50% of tip load and a lift height up to 125". The SW28 vertical lift delivers 2,800 lbs ROC at 50% and a lift height up to 134". Both machines are equipped with a 74.3 hp turbo-charged Perkins Tier 4 Final engine. Available in both H-pattern and ISO joystick hydraulic pilot controls, the machines will fit the preferences of any user. The ergonomically designed controls and pressurized cab delivers comfort and visibility, reducing operator fatigue and increasing safety.

	SW24	SW28
Horsepower	74.3 hp	74.3 hp
Operating weight	7,865 lbs	8,283 lbs
ROC @ 50%	2,350 lbs	2,800 lbs
Bucket hinge height	125.2"	134.6"
Std. hydraulic flow	22.5 gpm	22.5 gpm



Radial Lift
Lift up to 125".



Compact and durable –
Rugged cast iron axle housing.

Optional features:

- Fully enclosed pressurized cab with HVAC system
- Engine Block Heater
- Ride Control
- AM/FM Radio
- One-way Hydraulic Self-leveling
- Adjustable Auxiliary High Flow
- Additional Counterweights
- Additional options available

ST35, ST45

The Wacker Neuson Compact Track Loaders (CTL) deliver high operating capacity and maneuverability across rugged terrain. The ST35 radial lift delivers 3,500 lbs of ROC at 50% of tip load and a lift height up to 125". The ST45 vertical lift delivers 4,500 lbs of ROC at 50% and a lift height up to 134". Both machines are equipped with a 74.3 hp turbo-charged Perkins Tier 4 Final engine. Available in both H-pattern and ISO joystick hydraulic pilot controls, the machines can fit the preferences of any user. The ergonomically designed controls and pressurized cab deliver comfort and visibility, reducing operator fatigue and increasing safety.

	ST35	ST45
Horsepower	74.3 hp	74.3 hp
Operating weight	9,827 lbs	10,245 lbs
ROC @ 50%	3,500 lbs	4,500 lbs
Bucket hinge height	125.9"	135.4"
Std. hydraulic flow	22.5 gpm	22.5 gpm



Versatility
Wide range of attachments for any and all jobs.



Vertical Lift
Class leading 134" lift height.

- Optional features:**
- Fully enclosed pressurized cab with HVAC system
 - Engine Block Heater
 - Ride Control
 - AM/FM Radio
 - One-way Hydraulic Self-leveling
 - Adjustable Auxiliary High Flow
 - Additional Counterweights
 - Rotating Beacon
 - Additional options available

Wheels

If speed and agility are your priority, a wheeled loader is your first choice. Choose between multipurpose and premium tires.



Powertrain and Hydraulics



Tracks

17.7" / 450 mm wide tracks

A change in the weather doesn't mean a change in plans. High-floatation tracks enable these loaders to work where rubber tire machines can't.

Heavy-duty Tracks

Heavy-duty double-steel reinforced rubber tracks last longer than those on other machines. Easy-clean undercarriage shortens end-of-day cleanout and reduces wear due to dirt buildup.

Forged Steel Rollers and Idlers

Triple-flanged, forged steel rollers and single-flange steel idlers minimize de-tracking, improve ride, extend track life and are more durable than rubber coated rollers.

Elevated Sprocket Design

Elevated sprockets shed mud and debris as you work, reducing wear.

Simple Maintenance

When it's time to adjust track tension, all it takes is a common grease gun. Idlers and rollers are permanently sealed and lubricated.

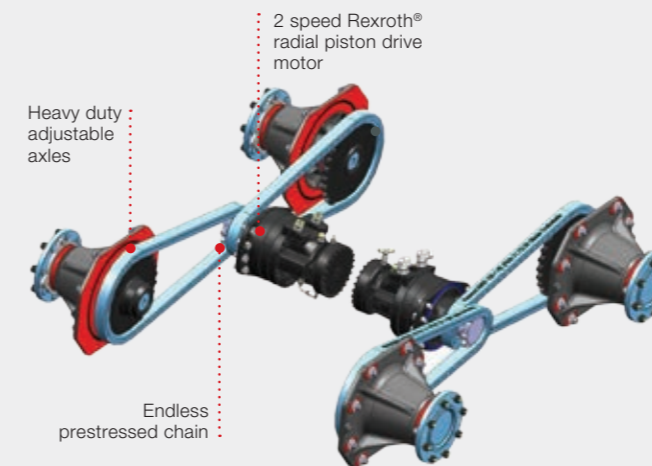
Embedded Steel

Tough steel braces guide and support the track when engaging the drive sprocket.



Dependability you expect.

- Heavy duty drive motors with shielded hoses (CTL) and internally run hoses ensure operation on even the harshest of jobsites.
- Spring applied, hydraulic-released wet-disc parking brakes are fully enclosed and never require maintenance.
- All switches and electrical connectors are sealed from moisture and dirt preventing corrosion and extending the life of the components.
- O-ring face-seal hydraulic fittings for the hydrostatic drive system essentially eliminates costly oil leaks.
- Rugged cast iron axle housings provide durability and are built to withstand the most rugged terrains.
- All drive chains are prestressed to minimize chain stretching during initial running periods for long-lasting durability without the need for frequent adjustments.



Smarter Exhaust

The engine exhaust is uniquely located in front of the cooling fan exhaust in order to mix and direct both air streams vertically away from the machine. This enables the machine to work in close quarters without concerns of the exhaust blowing on walls or the ground around the machine.



Comfort and accessibility that you can feel.

When was the last time “compact” and “comfortable” were used to describe a skid steer? When Wacker Neuson designed this cab, we did so with one thing in mind: the operator. Our design process considers the moment the operator enters the space, accounts for all user movements and positions during operation, and continues through operator exit. The result is a spacious cab with ergonomically designed user interfaces and seating, and all controls located in front of the operator.

Wide open entryways and flat floors allow for easier accessibility when getting in and out while providing ample leg and foot room. Operators will quickly notice the integrated comfort of the ergonomic air-ride seat (optional), highly-efficient automotive style HVAC system, and AM/FM radio (optional) with dual speakers to help increase user efficiency and minimizes operator fatigue.

Cab forward design

moves the operator closer to the attachment for a better vantage point.

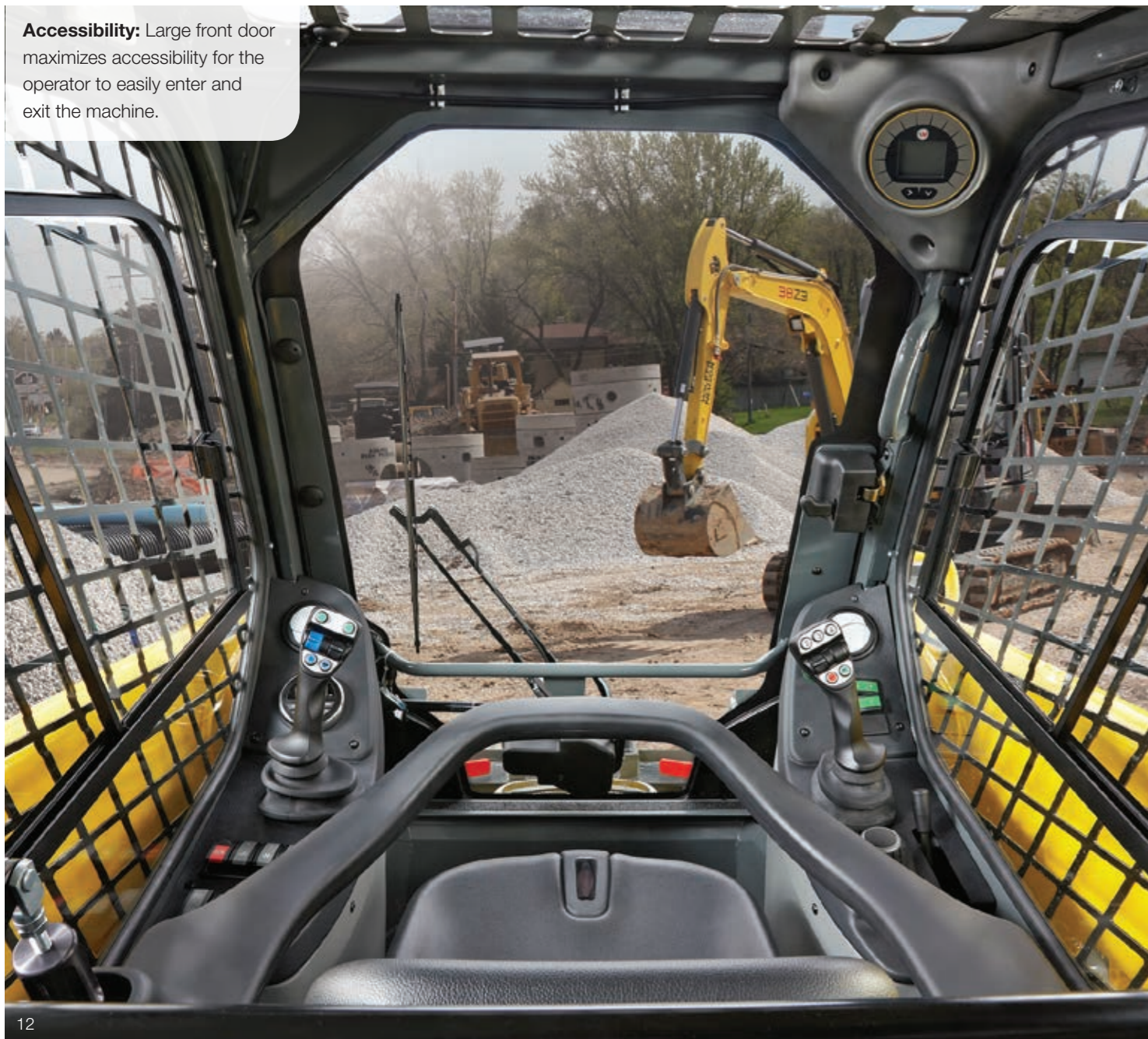


The ability to see both

leading and cutting edges ensures the operator is more confident and precise during operation.



Accessibility: Large front door maximizes accessibility for the operator to easily enter and exit the machine.



Safety: Fully adjustable pull-down padded lap bar features operator presence sensor and provides comfortable arm support.



Controls designed around operator preference.

ISO or H-pattern controls are available on all both Skid Steer and Compact Track Loaders, offering flexibility with a minimal learning curve for all operators. The machines are configured to be operated by two ergonomically designed joysticks to minimize operator fatigue.

ISO Controls provide machine driving controls with the left joystick while the right joystick controls the movements of the arm and attachment.

H-pattern Controls provide control of the left drive and lift while the right joystick controls the right drive and the tilt of the attachment.

Hydraulic Pilot Controlled Joysticks are standard on all loaders for smooth response and precision. They make the machine easy to control and are reliable and consistently precise over a long machine life.

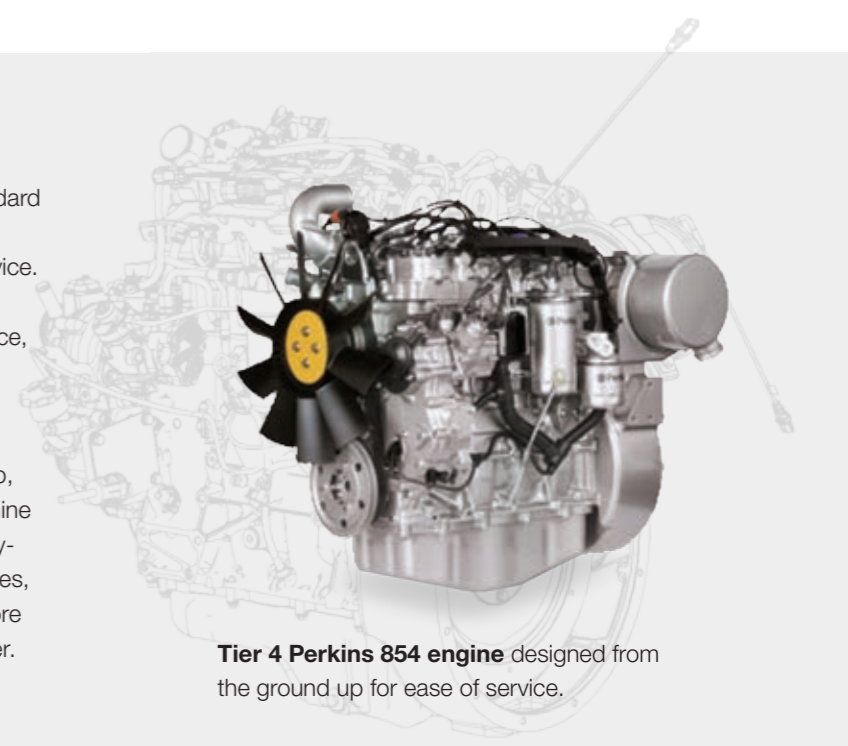
Joystick Controls allow you to keep your hands where they need to be to control the machine while changing speeds or operating an attachment. Proportional auxiliary hydraulics respond smoothly and allow for precise attachment control for optimum productivity.



Convenient access:
Important controls are placed right on the joystick so you don't have to take your hands off to change speeds or operate the attachment.

Tier 4 Final Engine

All Skid Steer and Compact Track Loaders come standard with Tier 4 Final engines. The Perkins 854 has been designed from the ground up to maximize ease of service. On-board electronic controls allow you to plan your servicing and maintenance requirements well in advance, ensuring your machines are in the field longer. Tier 4 NOx-reduction and particulate matter (PM) filtration technologies allow the engine to perform without constraint – delivering up to 318 Nm of torque at 74 hp, giving you better engine response and improved machine productivity, without sacrificing fuel efficiency. With fully-electronic controls and optimized combustion processes, the 854 Series is designed to make your machines more powerful, more productive, and more efficient than ever.



Tier 4 Perkins 854 engine designed from the ground up for ease of service.

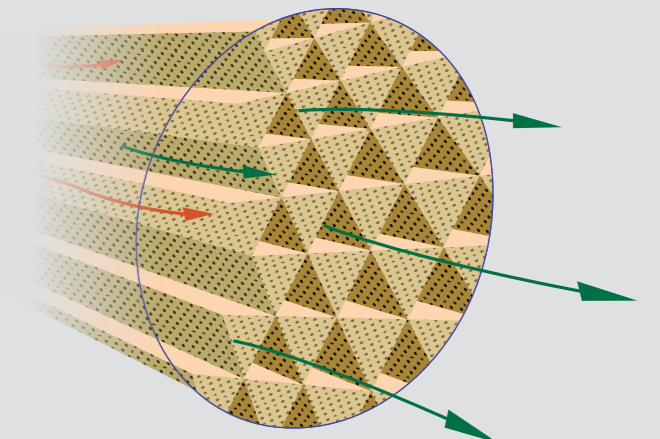
Tier 4 Advantages

- ECU and Common-Rail Injection System allows for better cold starts.
- Lower fuel consumption.
- Reduced NOx emissions by 80% compared to Tier 4 Interim Engines.
- Complies with job mandated emissions standards.
- Lower noise levels.



After treatment without the maintenance.

All Wacker Neuson Skid Steer and Compact Track Loaders utilizing the Perkins 854 engine come standard with a Particulate Matter Catalyst (PMC) as its aftertreatment. The PMC utilizes a flow-through concept in which particulate matter from the engine exhaust reacts with the catalyst to reduce emissions exhausted out of the machine. The PMC regenerates automatically, but the process does not require maintenance or impact the performance of the machine.



Available Attachments

- Ag forks
- Augers
- Bale spears (round, square)
- Blades (snow, utility)
- Breakers / hammers
- Brooms (angle, pickup)
- Cold planers
- Dozer blades
- Grapples (ag utility, brush-tined, scrap)
- Landplanes
- Mulching head
- Multipurpose buckets
- Pallet forks
- Power rakes
- Rock buckets
- Roller levels
- Rotary cutters
- Rotary tillers
- Scrapers (material, manure)
- Side-discharge buckets
- Snow blowers
- Snow pushers
- Toothbar
- Trenchers

See website for more options.



Accessibility where you need it.

Forward tipping cab provides ample room to access the key components of the machine. Rear engine door opens out while the top access door tilts up providing accessibility to nearly 100% of the engine components.



Mechanical Universal Attachment Plate:

All models come standard with an easy-to-use mechanical universal attachment plate which is compatible with most skid steer attachments in the marketplace.



Hydraulic Universal Attachment Plate (optional on all machines)

allows the operator to quickly and easily install and remove attachments without ever leaving the cab. (Only leave if auxiliary hydraulic connections are required).



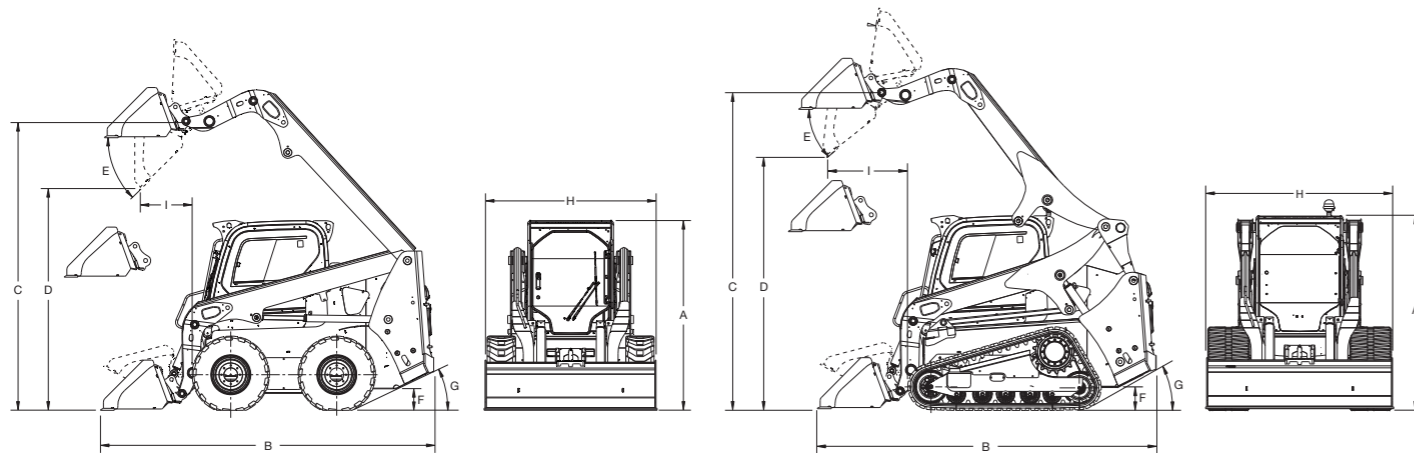
Easy-to-change attachments: All machines come standard with Faster Hydraulic Blocks for quick changing of hydraulic attachments. By pressing on the coupler, back pressure is relieved to the tank, making it easy to attach the lines.



Technical data

		SW24	SW28	ST35	ST45
UNIT					
Bucket dump angle w/ bucket at max. height	Degrees	45°	38°	45°	38°
Engine power	hp (kW)	74.3 (55.4)	74.3 (55.4)	74.3 (55.4)	74.3 (55.4)
Engine make/model		Perkins 854F-E34T Tier 4 Final	Perkins 854F-E34T Tier 4 Final	Perkins 854F-E34T Tier 4 Final	Perkins 854F-E34T Tier 4 Final
Operating weight	lb (kg)	7,865 (3,568)	8,283 (3,757)	9,827 (4,457)	10,245 (4,647)
ROC 50%	lb (kg)	2,350 (1,068)	2,800 (1,273)	3,500 (1,591)	4,500 (2,045)
ROC 35%	lb (kg)	-	-	2,450 (1,114)	3,150 (1,432)
Fuel capacity	gal (l)	24.3 (92.0)	24.3 (92.0)	24.3 (92.0)	24.3 (92.0)
Aux. flow (standard)	gal (l)/min	22.5 (85)	22.5 (85)	22.5 (85)	22.5 (85)
Aux. flow (high flow)	gal (l)/min	35.9 (136)	35.9 (136)	35.9 (136)	35.9 (136)
Aux. relief pressure	psi (bar)	3,338 (230)	3,338 (230)	3,338 (230)	3,338 (230)
Travel speed (low)	mph (kph)	6.8 (11)	6.8 (11)	4.3 (6.9)	4.3 (6.9)
Travel speed (high)	mph (kph)	11.2 (18)	11.2 (18)	8.7 (14)	8.7 (14)
Traction force	lb (kg)	12,300 (5,579)	12,300 (5,579)	12,300 (5,579)	12,300 (5,579)

		SW24	SW28	ST35	ST45
UNIT					
A Height to top of ROPS	ft in (mm)	81.9 (2,080)	81.9 (2,080)	81.9 (2,080)	81.9 (2,080)
B Overall length with bucket	ft in (mm)	144.2 (3,662)	143.9 (3,655)	144.2 (3,662)	143.9 (3,655)
C Bucket hinge pin lift height	ft in (mm)	125.2 (3,179)	134.6 (3,418)	125.9 (3,199)	135.4 (3,438)
D Bucket dump height at max. height	ft in (mm)	95.2 (2,419)	107.1 (2,721)	95.2 (2,419)	107.1 (2,721)
E Bucket dump angle w/ bucket pin at 124 in	degrees	30.5°	30.5°	30.5°	30.5°
F Ground Clearance	in (mm)	9.4 (240)	9.4 (240)	9.4 (240)	9.4 (240)
G Angle of Departure	degrees	25°	25°	30°	30°
H Overall Width	in (mm)	72 (1,830)	72 (1,830)	78 (1,981)	78 (1,981)
I Dump Reach at Max Height	in (mm)	22.6 (574)	35.2 (894)	21.7 (552)	34.3 (872)



Standard equipment and options

	SW24	SW28	ST35	ST45
Two speed transmission	●	●	●	●
Adjustable full suspension seat	●	●	●	●
Hydraulic pilot controls - ISO or H-pattern available	●	●	●	●
Back up alarm	●	●	●	●
Front and rear working lights	●	●	●	●
Rear and top windows	●	●	●	●
Auxiliary hydraulics with Faster quick coupler pressure relief	●	●	●	●
12 x 16.5 inch standard duty tires	●	●	-	-
17.7 inch wide rubber tracks	-	-	●	●
Mechanical coupler	●	●	●	●



Added value.

Warranty • Finance • Parts Availability



**WACKER
NEUSON**
all it takes!

Products are only as good as the service, technical support and training behind them. Wacker Neuson and our network of dealers provide everything you need to keep running at peak performance.



**2-YEAR
WARRANTY**

Warranty: Wacker Neuson's line of compact equipment features a factory standard 24-month/2,000 hour machine warranty. Ask your dealer about our extended service protection plan. Valid in USA and Canada.



**GENUINE
PARTS**

Parts and Service: A breakdown can cost you time and money. That's why all Wacker Neuson parts are available via our U.S. distribution center and are typically shipped within 24 hours of your order. You can count on getting the parts, service, maintenance and support you need, when you need them.



ACADEMY

Technical Training and Support: Wacker Neuson Technical Academy has been meeting the training needs of contractors, mechanics and dealer sales people for years. Training classes are held just minutes from Milwaukee at our production facility in Menomonee Falls, Wisconsin. Or, if you have a specific training need, we can bring the experts to your location. From in-depth industry-focused operation tips and process training to maintenance, our trained professionals can create a tailor-made program for you.



FINANCE

Flexible Financing:

- Low down payments
- Competitive rates
- Cash back options
- Seasonal payment options

Wacker Neuson is a global equipment manufacturer for the construction, agriculture, oil and gas, landscape, utilities and municipal industries. Our comprehensive portfolio stands firmly on outstanding reliability, innovative technology, personal service and close customer contact. In the United States and Canada, Wacker Neuson's full line of products are sold and rented by a network of over 4,000 dealers and supported by an industry leading team of factory trained sales, application and service personnel.



Blanchard Machinery Inc.
1890 N.E. 150 Street
North Miami Fla. 33181 bmisalz@aol.com
www.blanchardmachinery.net